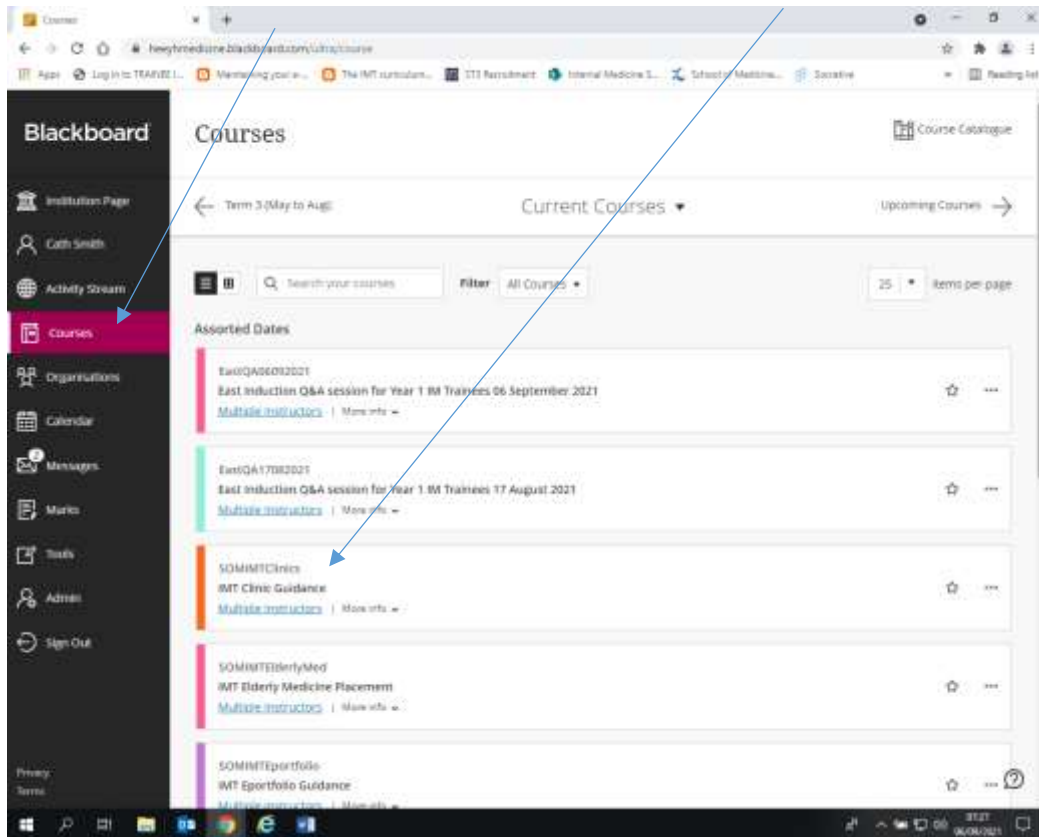


Blackboard Trainee Guide

Log into Blackboard with your username and password, it is best to use Google Chrome.

Once logged in, select courses on the left hand side of the screen. You then need to click on the course you wish to join, scroll down to find the appropriate course.

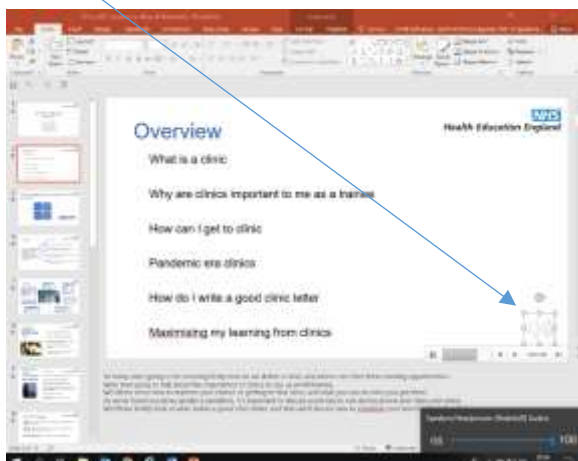


Induction material

IMT Clinic Guidance
IMT Elderly Med Placement
IMT ePortfolio Guidance
IMT Induction
IMT Intensive Care Medicine Placement

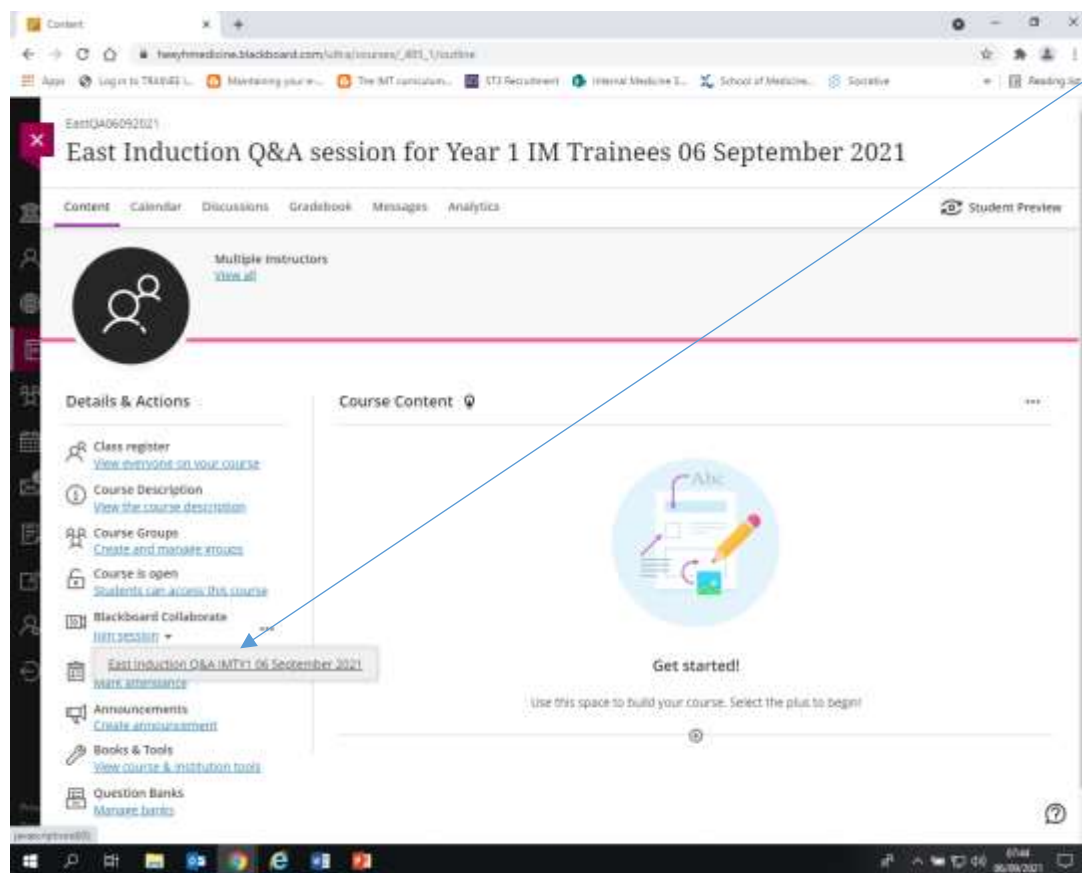
Once you click on each of the Induction material, it will bring up a series of PowerPoints, click on each and enable the sound to hear a voiceover for each one. Once you have viewed all the above list you will then need to complete the Induction Feedback on Maxcourse dated 10 September 2021, please ensure you have signed up for this

<https://www.maxcourse.co.uk/heeyhsom>

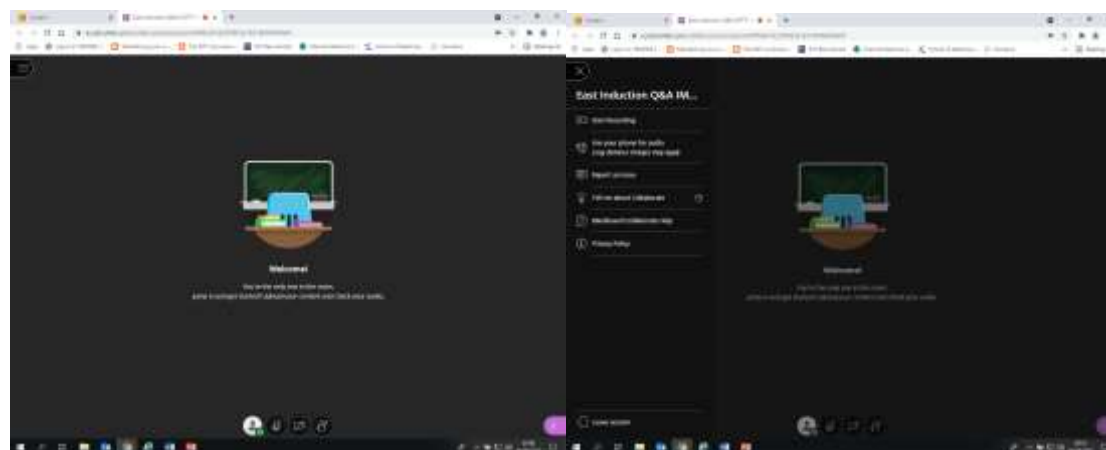


In order to join the mandatory Regional Teaching sessions, you need to ensure you have enrolled on Maxcourse for the appropriate teaching day, then as above select the teaching session on Blackboard Courses as above. You will only be able to join a teaching session up to 30 minutes before the scheduled time.

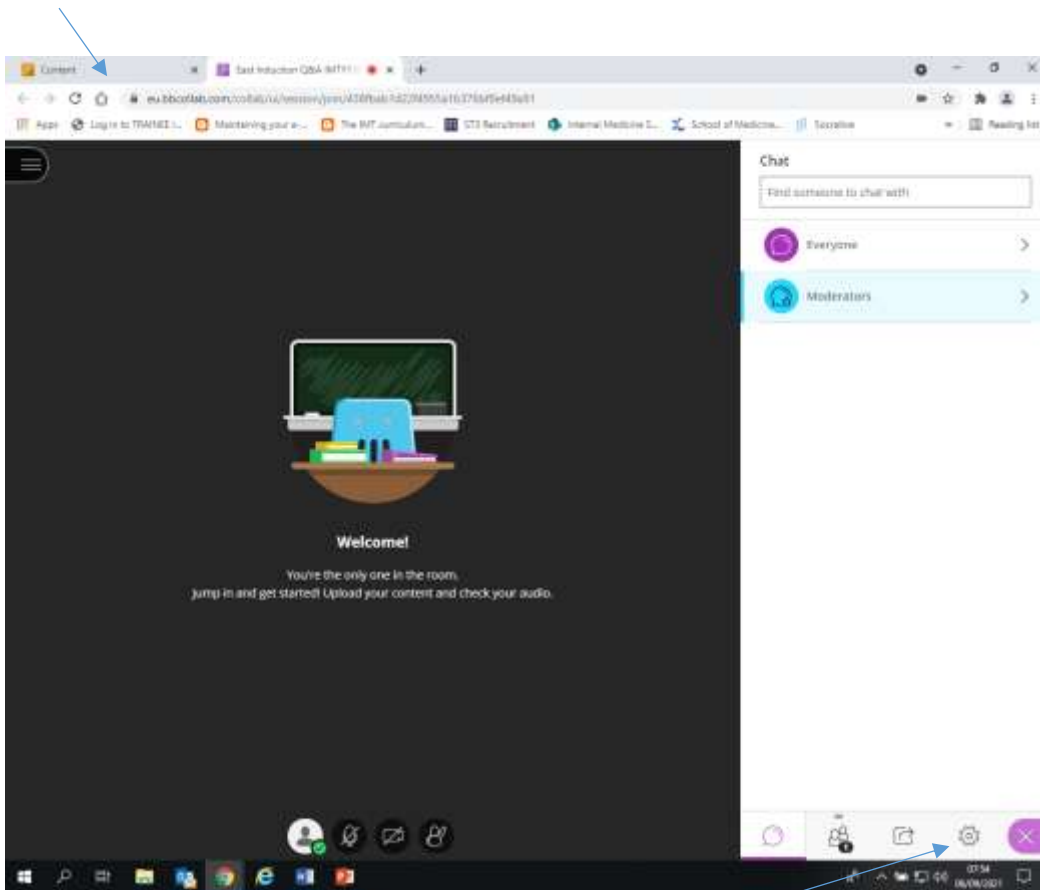
Once you have clicked on the appropriate session scroll down to Blackboard Collaborate and select Join session



This then takes you to the virtual teaching screen, you will need to enable your camera as the TPD's expect all trainees to be visible in these sessions. Please ensure you are muted at all time unless you wish to address the trainer. There are two tabs on screen, one is on the left hand side coloured black with 3 white lines, when you click this tab it opens up a series of information, one of them is 'tell me about Collaborate' which you may find useful



The purple Tab once opened enables you to see the chat function, attendees, sharing files/screen and settings. At the top of the screen, where it says Content, you can switch between screens to see if the facilitator has uploaded any files that you may need to view. The chat bubble is where you can chat to all your colleagues and the facilitator.



You can check your settings from the little cog to ensure you have the best experience in Blackboard and contact support if needed.

